



# MORPHO

U S E R   M A N U A L

**Multi-shot Pellet CO2 Airgun**

[www.reximex.com](http://www.reximex.com)

READ ALL INSTRUCTIONS AND WARNINGS  
IN THIS MANUAL BEFORE USING THIS AIRGUN

# **INDEX**



<b>01</b>	<b>WARRANTY</b>
<b>02</b>	<b>OPERATING THE SAFETY</b>
<b>03- 04</b>	<b>INSTALLING AND REMOVING CO2 CYLINDERS</b>
<b>05</b>	<b>LOADING PELLETS</b>
<b>06</b>	<b>MAINTAINING YOUR AIRGUN</b>
<b>07- 08</b>	<b>PARTS OF AIRGUN</b>

**WARNING!**

Not A Toy. Adult Supervision Required. Misuse Or Careless Use May Cause Serious Injury Or Death. "The Morpho" May Be Dangerous Up To 550 Yards (503 Meters). May Be Dangerous Up To 600 Yards (549 Meters).

You And Others With You Should Always Wear Shooting Glasses To Protect Your Eyes.

**Read All Instructions Before Using.**

Buyer And User Have The Duty To Obey All Laws About The Use And Ownership Of This Airgun.

Please read this owner's manual completely. And remember, this airgun is not a toy. Treat it with the same respect you would a firearm. Always carefully follow the safety instructions found in this owner's manual and keep this manual in a safe place for future use. If you have any questions regarding your new airgun, please contact Reximex.

[info@reximex.com](mailto:info@reximex.com)

**WARRANTY**

REXIMEX products carry a One Year Warranty against faulty workmanship and defective materials. Contact the dealer from which you purchased the airgun if it becomes necessary. If the airgun develops a defect within the warranty period, contact the dealer from whom it was purchased. The guarantee does not cover any damage caused by tampering with the airgun.

**TO PUT THE AIRGUN "ON SAFE" :**

- Locate the safety directly in back of the trigger.
- Push the safety from the left side all the way in . The safety is not "ON SAFE" unless it is pushed all the way in and the RED ring around the left side of the safety is NOT showing.

Like all mechanical devices, an airgun safety can fail. Even when the safety is ON SAFE", you should continue to handle the airgun safely. NEVER point the airgun at any person. NEVER point the airgun at anything you do not intend to shoot.

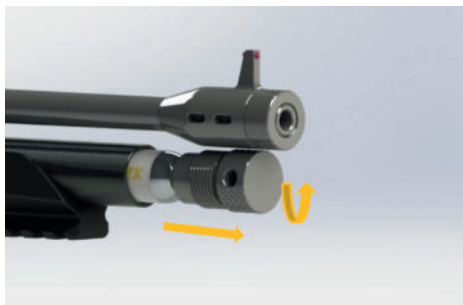
**To Take the Airgun "OFF SAFE" :**

- Push the safety from the right side all the way in.
- The airgun is ready to fire when "OFF SAFE". When you can see the RED line on the left side of the safety, the airgun is "OFF SAFE" and can be fired.



## **INSTALLING A NEW CO2 CARTRIDGE**

- Put the airgun "ON SAFE."
- Slowly turn the filler cap counter-clockwise all the way until you no longer hear the escape of CO2 gas.



### **WARNING!**

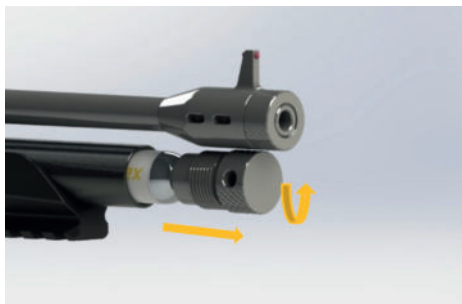
CO2 cylinders may explode at temperatures above 120°F (48.9°C). Do not mutilate or incinerate them. Do not expose them to heat or store CO2 cylinders at temperatures above 120°F (48.9°C).

- Pull the filler assembly from the action tube and remove the empty CO2 cartridge (if any) by pointing the muzzle of the airgun down.
- Insert the new CO2 cartridge into the airgun with the small neck of the CO2 cartridge into the action tube first.
- Replace the filler cap assembly in the action tube. Screw the filler cap completely into place until finger tight only.
- Cock the side lever by pushing the cocking handle up and pulling it all the way back until you hear the click sound. Close the side lever .
- Point the airgun in a SAFE DIRECTION, take "OFF SAFE" and pull the trigger. If the airgun does not make a popping noise after pulling the trigger, the CO2 is not being discharged. In that event, tighten the filler cap slightly and repeat cocking the side lever and firing the airgun until there is a popping noise, which will mean the airgun is releasing CO2 with each pull of the trigger.
- Return safety to the "ON SAFE" position.



### **Removing the CO2 Cartridge**

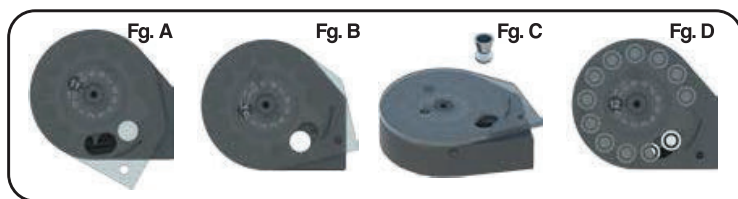
- Make sure the airgun is "ON SAFE"
- Make sure the airgun is unloaded
- Point the airgun in a SAFE DIRECTION.
- Slowly turn the filler cap counter-clockwise, being sure not to put your fingers in front of the barrel.
- Move hand away from filler cap until you do not hear the escape of CO2 gas • Slowly turn the filler cap clockwise all the way being careful not to come in contact with any remaining CO2.
- Pull the filler assembly from the action tube.
- Point the muzzle of the airgun down so the CO2 cartridge will fall out.



## **LOADING AND UNLOADING PELLETS**

### **C-1 Loading the magazine**

- Make sure your airgun on SAFE.
- Move the clear cover over the catch point and rotate in the direction of the arrows (clockwise).
- Place a finger under the magazine covering the hole, place the first pellet in the magazine nose first, make sure that the pellet does not protrude out of magazine. If the pellet does protrude, simply push the pellet inward.
- Rotate the cover counterclockwise and place the remaining pellet into the magazine. Upon completion rotate the cover until it comes to rest. See as below figure.



### **C-2 Loading the Airgun**

- Make sure the airgun is "ON SAFE."
- Point the airgun in a SAFE DIRECTION.
- Cock the side lever by pushing the cocking handle up and pulling the side lever all the way back.
- To fit the magazine into the airgun, pull the cocking handle backwards until it stops. With the cover of the magazine facing the butt of airgun, insert the magazine from the right side and push it inward until it snaps into place.
- Lightly push the pellet into the barrel by moving the cocking lever to the full forward position.
- Close and lock the lever by pushing the cocking handle forward and down until firm resistance is felt.
- Be sure the cocking lever is closed and locked before firing.

## **Maintaining Your Airgun**

- Before you attempt to oil your airgun, make sure the airgun is "ON SAFE", unloaded and the CO2 cylinder has been removed.
- Your airgun will maintain proper function longer if you place one drop of oil on the bolt o-ring every 250 shots .
- DO NOT use petroleum distillate based oil or solvent. DO NOT over-oil as this can cause damage to your airgun.
- DO NOT MODIFY OR ALTER YOUR AIRGUN. Attempts to modify the airgun in any way inconsistent with this manual may make your airgun unsafe to use, cause serious injury or death, and will void the warranty.
- If you drop your airgun, visually check to see it works properly before you use it again. If anything seems changed, like a shorter or weaker trigger pull, this may mean worn out or broken parts. Contact your dealer or send e-mail to [info@reximex.com](mailto:info@reximex.com)

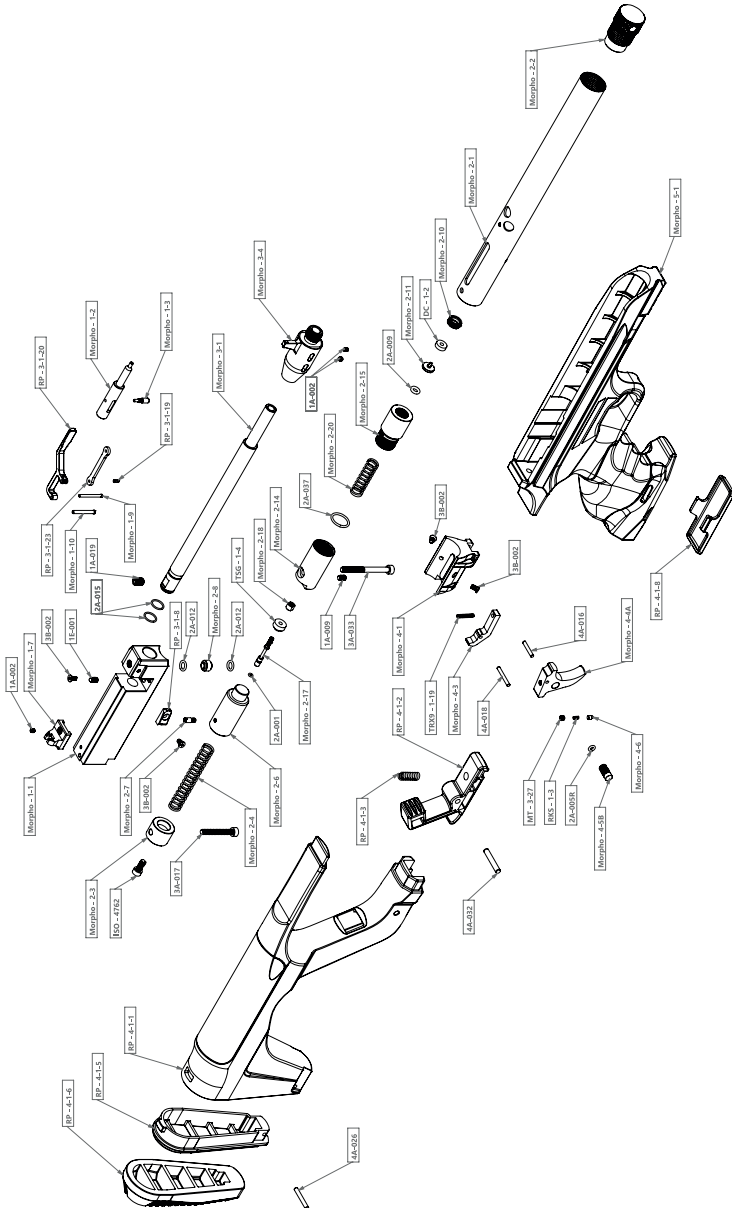


Drawn On: March 21th, 2025  
Resim Tarihi: 21 Mart 2025

Please explicitly specify following information when ordering spare parts;

- 1) "Part Code" that's seen in this drawing
- 2) "Draw Date" of this exploded view (on the right top corner of the page)
- 3) "Caliber" information for parts with an \*

**Morpho Synthetic**  
*Patlatılmış Görünüm / Exploded View*



MORPHO		
Parça Kodu / Part Code	Parça Adı	Part Name
Morpho - 1-1	Kasa	Chassis
Morpho - 1-2	İğne	Pellet Pusher
Morpho - 1-3	İğne Sürücü Civata	Pellet Pusher Screw
Morpho - 1-7	Sabit Gez	Rear Sight
Morpho - 1-9	Kurma Kolu Arka Pimi	Cocking Lever Back Pin
Morpho - 1-10	Kurma Kolu Dayama Pimi	Cocking Lever Stop Pin
Morpho - 2-1	Tüp Yuvası	Tube House
Morpho - 2-2	Tüp Yuvası Ön Kapak	Tube House Front Cap
Morpho - 2-3	Tüp Yuvası Arka Kapak	Tube House Back Cap
Morpho - 2-4	Çekiç Yayı	Hammer Spring
Morpho - 2-6	Çekiç	Hammer
Morpho - 2-7	Çekiç Sürücü Civata	Hammer Pusher Screw
Morpho - 2-8	Tüp Kasa Bağlantı Bloğu	Tube Chassis Connection Block
Morpho - 2-10	Tüp Bağlantı Jakı Dış Parça	Tube Connection Type Out Part
Morpho - 2-11	Tüp Bağlantı Jakı İç Parça	Tube Connection Type Inner Part
Morpho - 2-14	Hava Giriş Portu Ön Parça	Air Into Port Front Housing
Morpho - 2-15	Hava Giriş Portu Arka Parça	Air Into Port Back Housing
Morpho - 2-17	Çekiç Sıbobu	Hammer Valve
Morpho - 2-18	Çekiç Sıbobu Dayaması	Hammer Valve Base
Morpho - 2-20	Çekiç Sıbobu Yayı	Hammer Valve Spring
Morpho - 3-1	Namlu	Barrel
Morpho - 3-4	Nozzle	Nozzle
Morpho - 3-5	Nozzle Dış Koruma Kapağı	Nozzle UNF 1/2 Thread Protector
Morpho - 4-1	Tetik Korkuluğu	Trigger House
Morpho - 4-3	Çekiç Tutucu	Hammer Holder
Morpho - 4-4B	Tetik	Trigger
Morpho - 4-5B	Emniyet	Safety
Morpho - 4-6	Emniyet Pimi	Safety Pin
Morpho - 5-1	Sentetik Kundak	Synthetic Stock
4A-010	Kurma Kolu Arka Pimi	Cocking Lever Back Pin
RP - 4-1-1	RP Sentetik Dipçik	RP Synthetic Stock
RP - 4-1-2	RP Dipçik Mandalı	RP Synthetic Stock Button
RP - 4-1-3	RP Dipçik Mandalı Yayı	RP Synthetic Stock Button Spring
RP - 4-1-5	RP Omuzuk Plastik İskelet	RP Butt-Pad Polymer Frame
RP - 4-1-6	RP Taban Lastiği	RP Butt Pad
RP - 4-1-8	RP Sentetik Dipçik Kabza Alt Kapak	RP Synthetic Hand Grip Lower Lid
RP - 3-1-8	RP Şarjör Yan Dayaması	RP Magazine Side Stop
RP - 3-1-19	RP Kurma Kolu Levyesi Arka Pim	RP Cocking Lever Link Rear Pin
RP - 3-1-20	RP Kurma Kolu	RP Cocking Lever
RP - 3-1-23	RP Kurma Kolu Levyesi	RP Cocking Lever Link
TRX 9 - 1-19	TRX 9 Arka Kapak Kilit Yayı	TRX 9 Slider Cover Plate Locking Spring
MT - 3-27	Meta Kontra SetScrew	Meta Counter SetScrew
RKS - 1-3	Reximex Güç Ayar Valfi Yayı	Reximex Power Adjustment Valve Spring
TSG - 1-4	Reximex Konik Çekiç Valfi Yastığı	Reximex Conical Hammer Valve Seal Pad
DC -1-2	Kalın Conta	Thick Seal
1A-002	M3x3 Oyuk Uçlu SetScrew - ISO 4029	M3x3 Cup Point SetScrew - ISO 4029
1A-009	M4x6 Oyuk Uçlu SetScrew - ISO 4029	M4x6 Cup Point SetScrew - ISO 4029
1A-019	M6x6 Oyuk Uçlu SetScrew - ISO 4029	M6x6 Cup Point SetScrew - ISO 4029
1E - 001	M4x8 - Bilyalı SetScrew	M4x8 - Ball Point SetScrew
2A-001	2x1 O ring NBR 70	2x1 O ring NBR 70
2A-005R	3x1,5 Kırmızı O ring	3x1,5 Red O ring
2A-009	4x2 O ring NBR 70	4x2 O ring NBR 70
2A-012	5,5x1,5 O ring NBR 70	5,5x1,5 O ring NBR 70
2A-015	9x1 O ring NBR 70	9x1 O ring NBR 70
2A-037	13x1,5 O ring NBR 70	13x1,5 O ring NBR 70
3B-002	M3x6 Havşabaş Vida - ISO 10642	M3x6 Socket Countersunk Head Screw - ISO 10642
3A-017	M4x30 Imbus Civata - ISO 4762	M4x30 Socket Head Screw ISO - 4762
3A-033	M4x45 Imbus Civata - ISO 4762	M4x45 Socket Head Screw ISO - 4762
ISO - 4762	M4x10 Imbus Civata - ISO 4762	M4x10 Socket Head Screw ISO - 4762
4A-016	2,5x16 Standart Pim - ISO 8734	2,5x16 Standard Pin - ISO 8734
4A-018	2,5x20 Standart Pim - ISO 8734	2,5x20 Standard Pin - ISO 8734
4A-026	3x22 Standart Pim - ISO 8734	3x22 Standard Pin - ISO 8734
4A-032	4x24 Standart Pim - ISO 8734	4x24 Standard Pin - ISO 8734

This image shows a single sheet of white paper with horizontal ruling lines. The lines are evenly spaced and run across the width of the page. There are no margins, text, or other markings on the paper.



**REXIMEX İt. İh. Av Malz. Sav. San. Tic. Ltd. Şti.**

📍 Bayavşar Mahallesi 41958. Sokak No:3 Beyşehir / Konya

☎ 0332 511 0055 ✉ [export@reximex.com](mailto:export@reximex.com)

🌐 [www.reximex.com](http://www.reximex.com)

